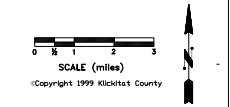


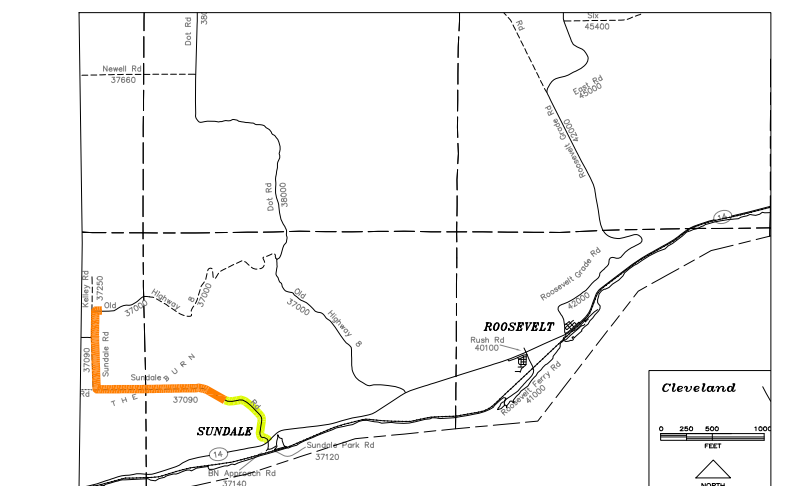
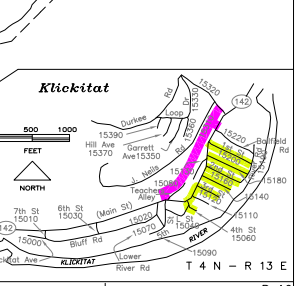
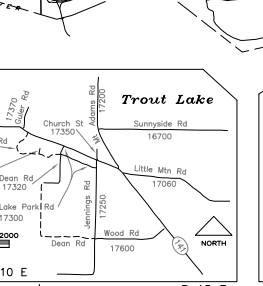
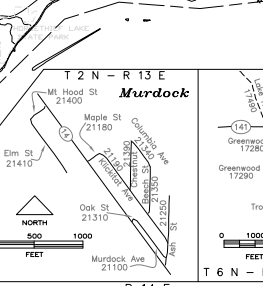
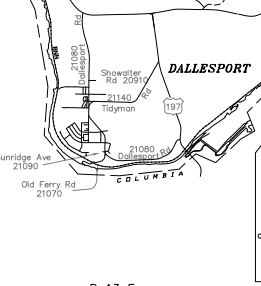
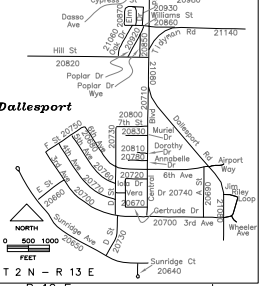
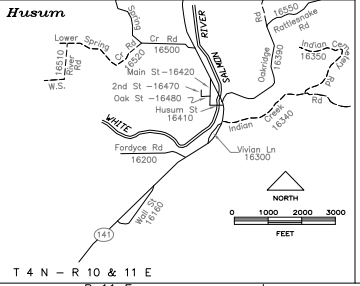
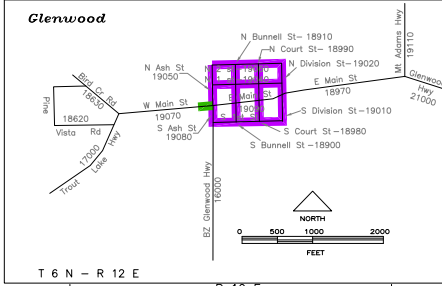
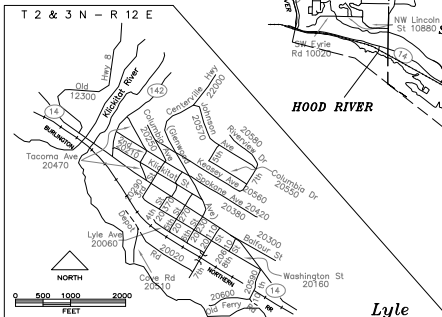
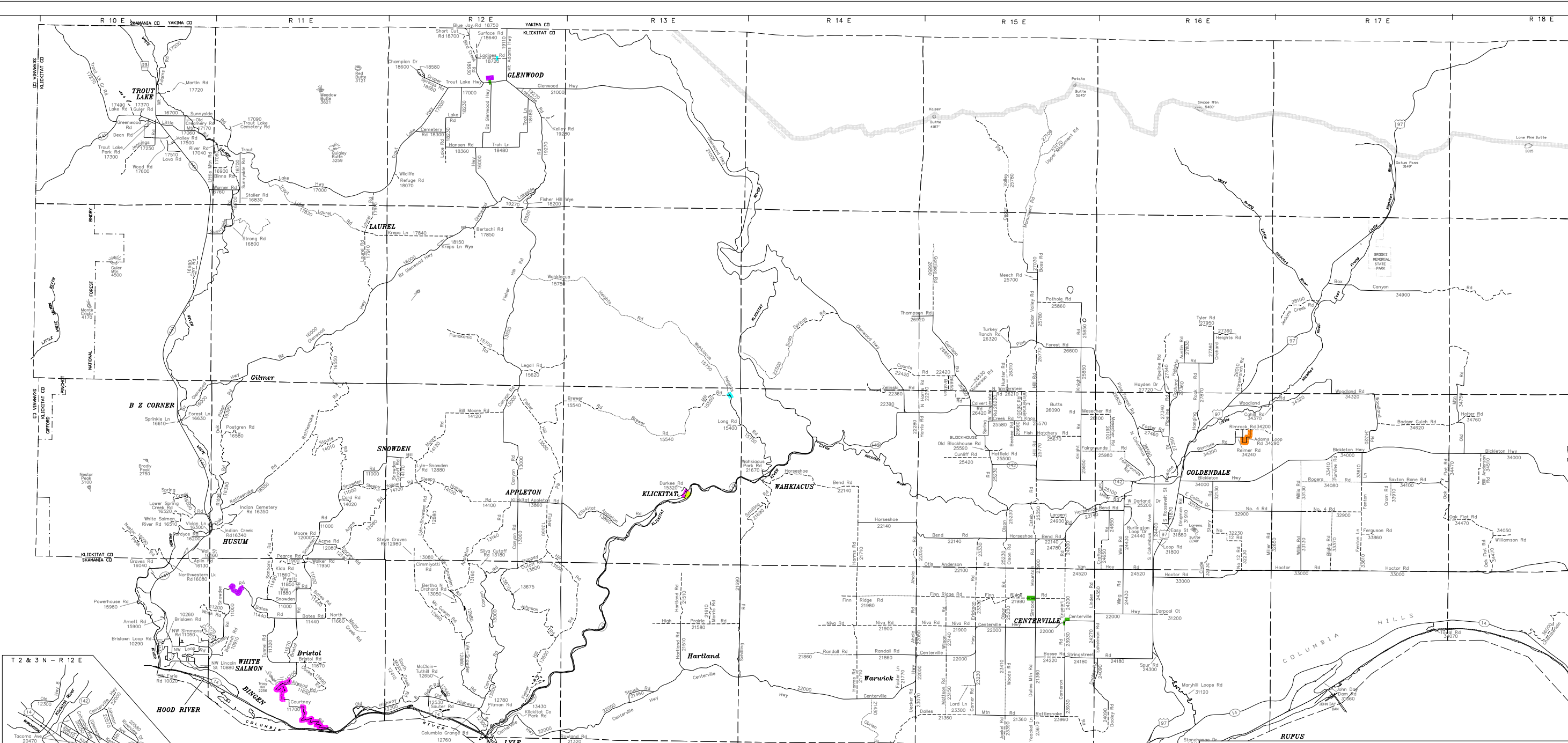
KLICKITAT COUNTY

- NATIONAL FOREST
- STATE HIGHWAY
- PAVED (07)
- PAVED (08)
- PAVED (09)
- GRAVEL (08)
- GRAVEL (09)
- PRIMITIVE (09)
- CREEK
- TRANSMISSION LINE
- GAS PIPELINE
- RAILROAD
- CITY LIMITS

- 2022
- 2023
- 2024
- 2025
- 2026



Six Year Road Program 2022 - 2027 West End



T 6 N - R 10 E R 10 E T 4 N - R 10 & 11 E R 11 E T 2 N - R 13 E R 12 E T 2 N - R 13 E R 13 E T 6 N - R 10 E R 14 E T 6 N - R 10 E R 15 E T 4 N - R 13 E R 16 E