



KLICKITAT COUNTY PLANNING DEPARTMENT

228 W. Main St., MS: CH-17, Goldendale, Washington 98620
VOICE: 509 773-5703 or 1 800 765-7239
FAX: 509 773-6206

November 18, 2010

Michael McCormick
Windy Point Partners, LLC
P O Box 272
Goldendale, WA 98620

Re: Windy Point Project Layout Revision – Lower Davenport
EOZ2006-01

Dear Mr. McCormick,

I have reviewed your letter dated September 20, 2010 and November 4, 2010. The request provides updates on the project layout, changes to turbine access roads and transmission line design to accommodate 17 turbines in the Lower Davenport portion of the Windy Point Wind Project (Project). The new turbine locations and transmission lines are within the permitted Project boundary, except that portion of the N/2 of Section 9, Township 3 North, Range 18 East, WM., Klickitat County, containing approximately 106.84 acres. Pursuant to Klickitat County Code 19.39:5, the Planning Department may approve minor revisions to EOZ project area. Minor revisions include the addition of property to a project which does not exceed 160 acres of leased property. The modification will not change the number of turbines or the maximum output of the Project (95 turbines/242.5MW). This minor revision to the project area is approved.

The Planning Department has reviewed the letter report and the conditions of EOZ2006-01. Windy Point Partners, LLC (WPP) incorporated additional field surveys for cultural resources and critical areas. The data collected indicate no new, significant impacts will occur as a result of the project's modifications. After construction, all road-related impacts (including internal turbine access roads) will be reduced to minimal operational width; the disturbed area will be restored and reseeded. Any other required mitigation will occur in accordance with the EOZ permit conditions. Furthermore, to the greatest extent practicable, WPP will minimize the use of overhead power lines by placing collector lines underground. It is understood that at a minimum, the collection line for turbines # 15, 16 and 17 will be underground. A final undergrounding proposal will be submitted to the Department for review and approval.

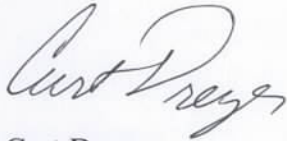
The cultural resource survey entitled *Archaeological and Historic Resource Survey for the Windy Point Wind Energy Project, Lower Davenport Area, (AINW Sept 15, 2010)*, and an Unanticipated Discovery Plan including a construction management plan were submitted to the Planning Department, the Department of Archaeology and Historic Preservation, and the Yakama Nation

for review and comment. Based on the reports and comments received, the proposed layout was revised to avoid potential impacts to historic and cultural resources. Please monitor construction activities to ensure that all cultural properties are avoided and train construction workers on the need to avoid cultural properties and procedures to follow if previously unidentified cultural properties are encountered during construction. Note that if any previously unidentified cultural resources properties are encountered during construction, cease construction activities in the immediate vicinity of the site pending evaluation by a qualified archeologist and consultation with applicable agencies to identify appropriate mitigation measures.

Based on the above, the Department has determined the revised turbine/transmission line locations and the associated access road, as set forth in the attached map, are consistent with EOZ 2006-01 and the SEPA review completed for the Project.

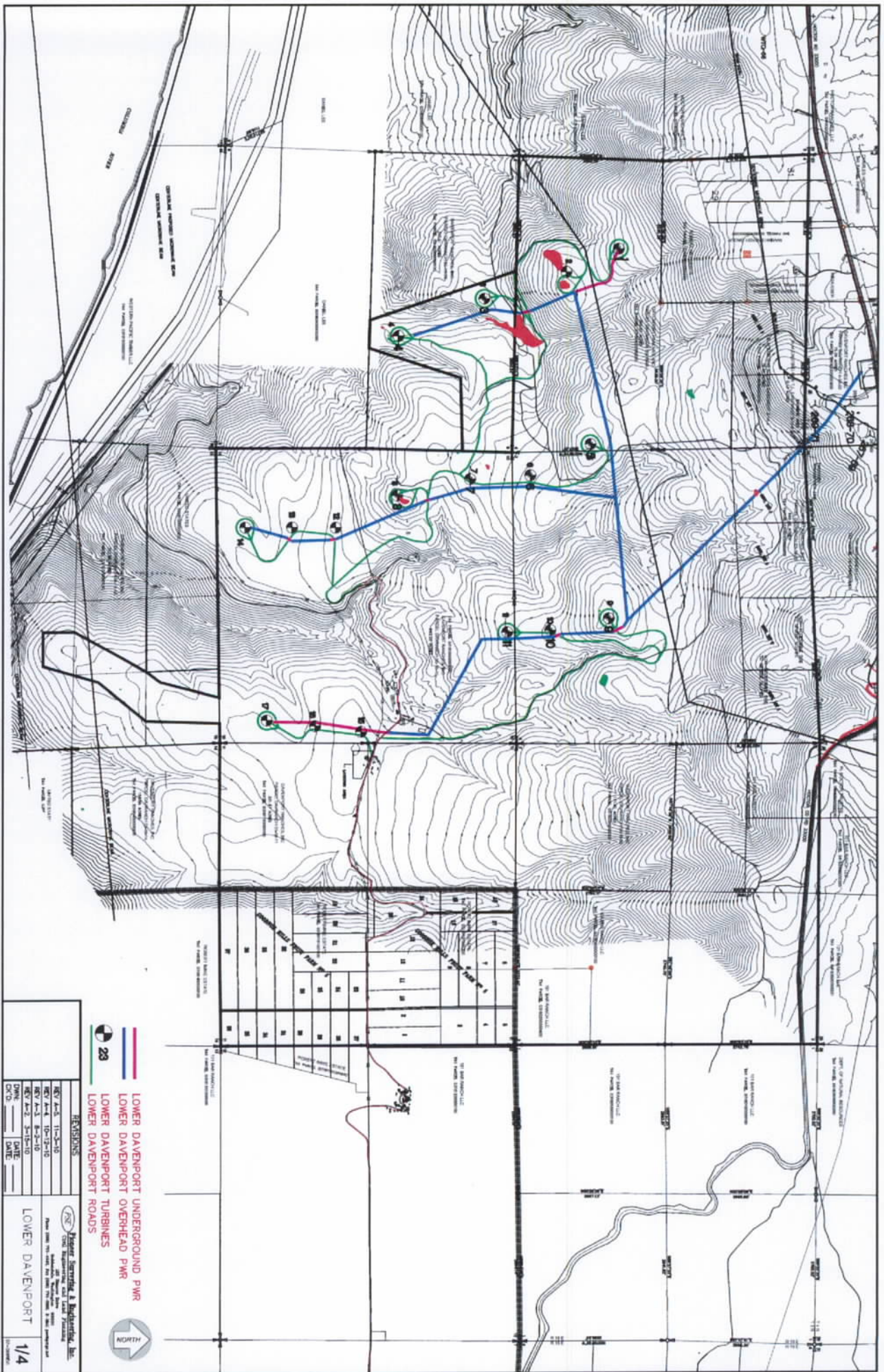
If you have any questions or comments, please do not hesitate to contact me.

Sincerely,

A handwritten signature in cursive script, appearing to read "Curt Dreyer".

Curt Dreyer
Planning Director

cc: Brandy Myers



- LOWER DAVENPORT OVERHEAD PWR
- LOWER DAVENPORT TURBINES
- LOWER DAVENPORT ROADS



REVISIONS	
REV A-5	11-2-10
REV A-4	10-2-10
REV A-3	8-2-10
REV A-2	5-15-10
OWN	DATE
CVD	DATE
LOWER DAVENPORT	
1/4	

HEWLETT
 Project Engineering & Architecture, Inc.
 10000 Highway 100, Suite 100
 Houston, Texas 77036
 Phone: 281.485.1000
 Fax: 281.485.1001
 www.hewlett.com