

Legend

- Saddle Mountains Basalt
- Wanapum Basalt
- Grande Ronde Basalt

Aspect consulting
IN-DEPTH PERSPECTIVE

179 Madrone Lane North
Bainbridge Island, WA 98110
(206) 780-9370

811 First Avenue #480
Seattle, WA 98104
(206) 328-7443

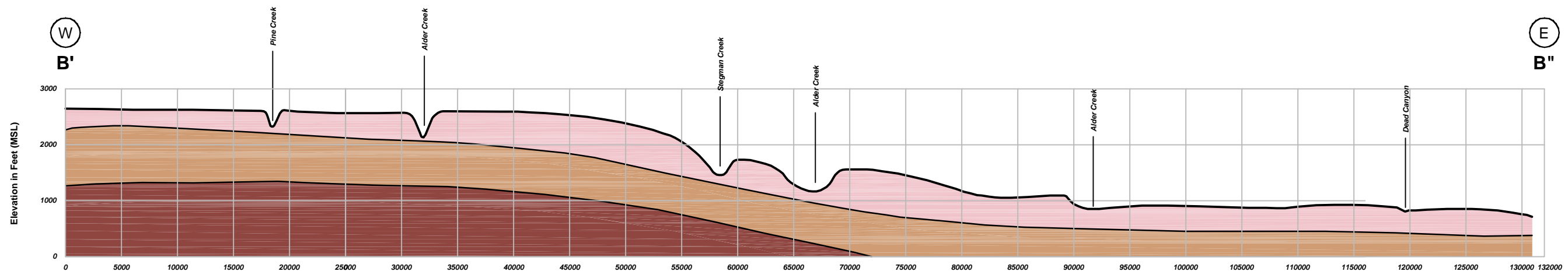
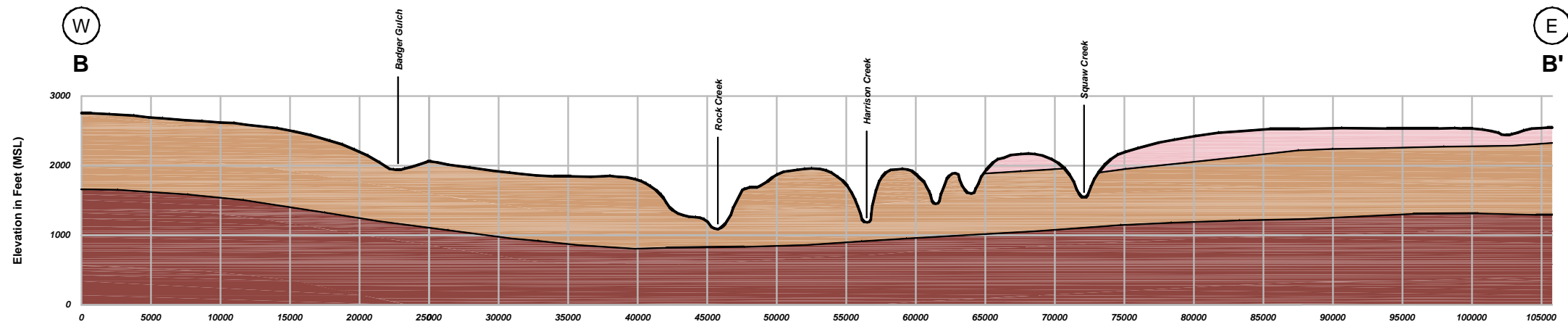
Cross Section A-A'

WRIA 31 Watershed Planning
Benton, Klickitat & Yakima Counties, Washington

DATE:	March 2004
DESIGNED BY:	ILE/GJC
DRAWN BY:	JRS
REVISED BY:	

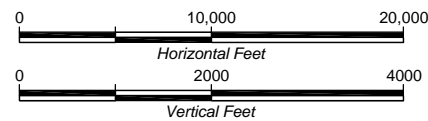
PROJECT NO.	030009
FIGURE NO.	2-4

C:\WPBIA\030009\WPBIA_31\2004-11\Watershed Planning\030009_A.dwg



Legend

- Saddle Mountains Basalt
- Wanapum Basalt
- Grande Ronde Basalt



Aspect consulting
IN-DEPTH PERSPECTIVE

179 Madrone Lane North
Bainbridge Island, WA 98110
(206) 780-9370

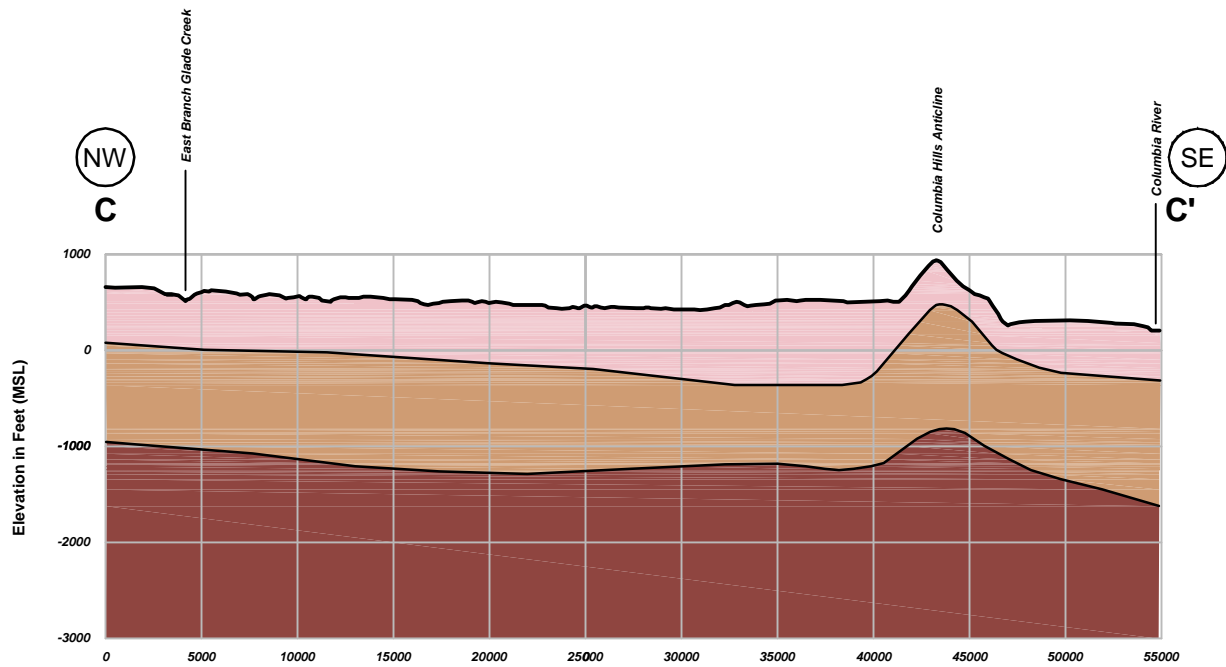
811 First Avenue #480
Seattle, WA 98104
(206) 328-7443

Cross Section B-B'

WRIA 31 Watershed Planning
Benton, Klickitat & Yakima Counties, Washington

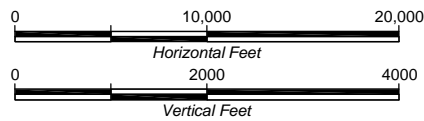
DATE:	March 2004
DESIGNED BY:	ILE/GJC
DRAWN BY:	JRS
REVISED BY:	

PROJECT NO.	030009
FIGURE NO.	2-5



Legend

- Saddle Mountains Basalt
- Wanapum Basalt
- Grande Ronde Basalt



Aspect consulting
IN-DEPTH PERSPECTIVE

179 Madrone Lane North
 Bainbridge Island, WA 98110
 (206) 760-9370

811 First Avenue #480
 Seattle, WA 98104
 (206) 326-7443

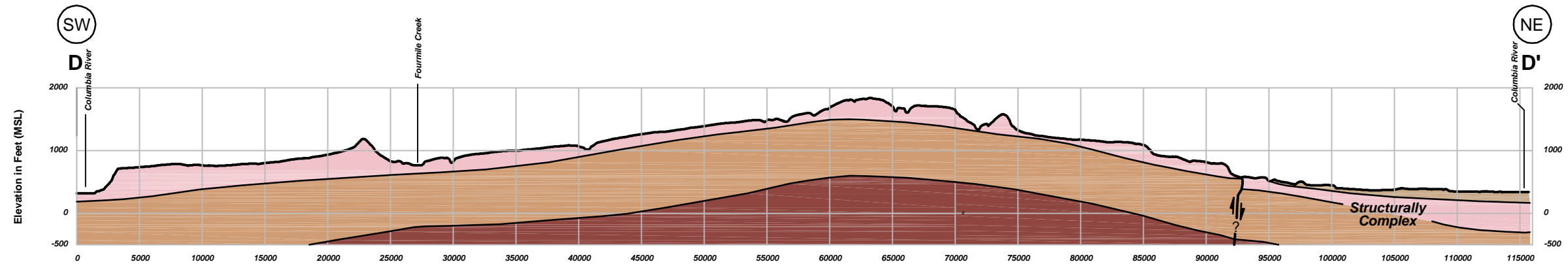
Cross Section C-C'

WRIA 31 Watershed Planning
 Benton, Klickitat & Yakima Counties, Washington

DATE: March 2004
 DESIGNED BY: ILE/GJC
 DRAWN BY: JRS
 REVISED BY: -

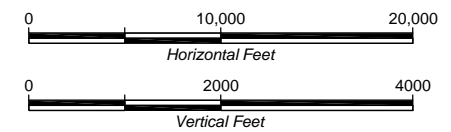
PROJECT NO.
030009

FIGURE NO.
2-6



Legend

- Flood Deposits - Gravel
- Saddle Mountains Basalt
- Wanapum Basalt
- Grande Ronde Basalt



Aspect consulting
IN-DEPTH PERSPECTIVE

179 Madrone Lane North
Bainbridge Island, WA 98110
(206) 760-9370

811 First Avenue #480
Seattle, WA 98104
(206) 328-7443

Cross Section D-D'

WRIA 31 Watershed Planning
Klickitat & Benton Counties, Washington

DATE: March 2004	PROJECT NO. 030009
DESIGNED BY: ILE/GJC	FIGURE NO. 2-7
DRAWN BY: SDM	
REVISED BY: JRS	